

Seismic data processing

The GII Seismic Data Processing Center has been supporting local and overseas clients for decades, since the time of analog recording and processing systems up to state-of-the-art interactive workstations.

Over the years thousands of cross-sections with a variety of field configurations and sources, both land and marine, 2-D and 3-D, have been processed. A wide range of clients from the oil industry, water exploration, engineering and research have been served.

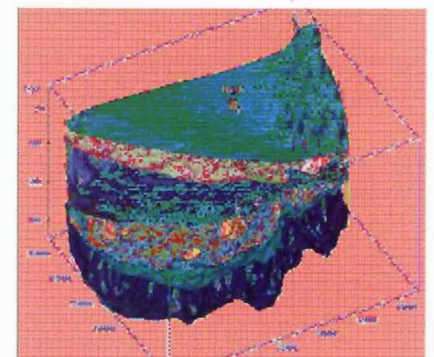
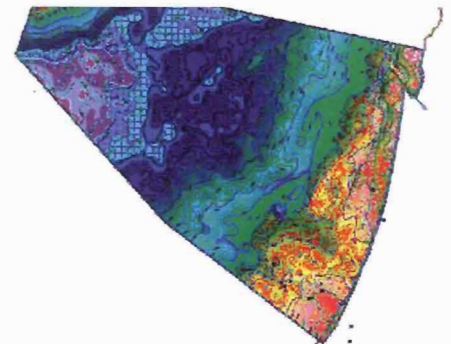
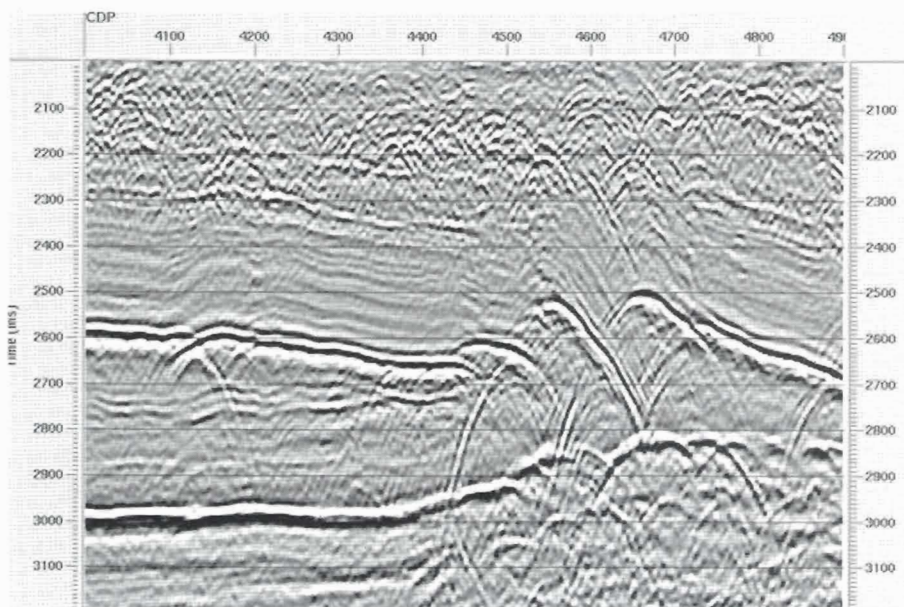
The Center supports the GII field crew with an on-site portable system in remote locations overseas and is involved in consulting services for international firms. The Center works closely with the GII seismic R&D group by implementing ideas and products. Our people, all with earth science academic backgrounds, are also involved in the interpretation of seismic data, thus enhancing our understanding of every client's needs. The Center has successfully implemented its skills in imaging of complex structures such as over thrust belts using depth migration, as well as dealing with stratigraphic plays involving borehole data and AVO techniques.

HARDWARE

The GII Data Processing Center is equipped with modern SUN Microsystems workstations. We support a range of tape formats and have a variety of plotting devices.

SOFTWARE

The Center is currently running the ProMAX and Paradigm™ (Focus and Geodepth) interactive processing package with 2-D and 3-D capabilities. These packages support all possible needs for standard processing and interpretation from field geometry through refraction statics, a large selection of deconvolution algorithms, residual statics routines, velocity analysis and pre/post stack migration.



המכון הגיאופיזיקאי לישראל The Geophysical Institute of Israel

P.O.B 182, Lod, 71100 ISRAEL 71100 Tel. 972-8-9785888 Fax. 972-8-9208811 www.gii.co.il